

Media Release

Monday, 7 August 2017

Woodside Energy Ltd.
ACN 005 482 986
Woodside Plaza
240 St Georges Terrace
Perth WA 6000
Australia
T: +61 8 9348 4000
F: +61 8 9214 2777
www.woodside.com.au

WOODSIDE MAKES THIRD GAS DISCOVERY IN MYANMAR

Woodside advises that the Pyi Thit-1 exploration well in Block A-6 in the Southern Rakhine Basin, located offshore Myanmar, has intersected a gross gas column of approximately 65 metres. A net gas pay interval of approximately 36 metres has been interpreted within the primary target sandstone reservoir.

Woodside CEO Peter Coleman said the Pyi Thit-1 discovery was another success in an underexplored region.

“This result builds on our understanding of the potential resources in the Southern Rakhine Basin and will further inform our consideration of development options,” he said.

The Pyi Thit-1 well was spudded on 10 June and drilled to a total depth of 4,570 metres. Following drilling, wireline logging was conducted and confirmed the presence of a gas column through pressure measurements and gas sampling.

A drill stem test was subsequently performed across a 29 metre section of the reservoir and flowed at ~50 mmscf/d on a 44/64” choke over 44 hours with strong reservoir pressure support.

The gas discovery at Pyi Thit-1 follows previous finds made by Woodside at the Shwe Yee Htun-1 well in Block A-6, announced on 4 January 2016, and the Thalin-1A well in Block AD-7, announced on 12 February 2016.

Woodside Energy (Myanmar) Pte Ltd holds a 40% stake in Block A-6 and is the joint operator of the block and operator of the Pyi Thit-1 well. MPRL E&P Pte Ltd, with a 20% interest, is joint operator of Block A-6. Total E&P Myanmar holds the remaining 40% interest in the block.

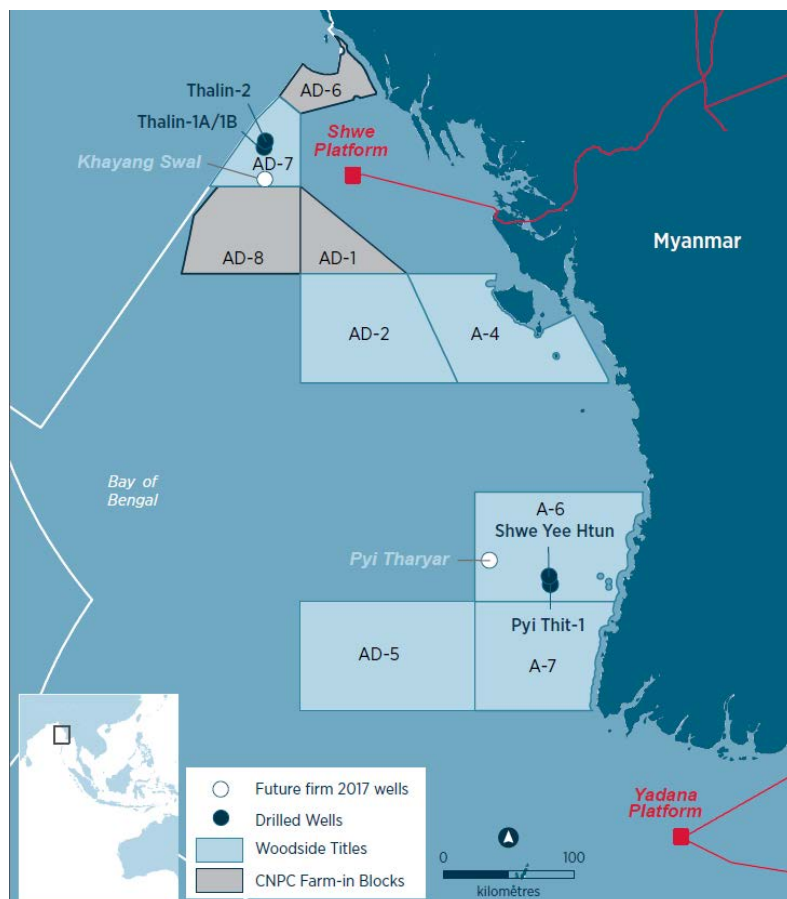
Contacts:**MEDIA****Michelle Grady**

W: +61 8 9348 5995

M: +61 418 938 660

E: michelle.grady@woodside.com.au

WOODSIDE INTERESTS IN MYANMAR



Block	Area (km ²)	Woodside Myanmar ¹	Total ²	MPEP ³	MPRL ⁴	Daewoo ⁵	Shell ⁶	CNPCI ⁷
A-6	9,829	40% (joint operator)	40%		20% (joint operator)			
AD-7	2,791	40% (joint operator)				60% (joint operator)		
A-4	7,479	45%		10%			45 (operator)	
AD-2	8,098	45%					55% (operator)	
A-7	8,220	45% (operator)		10%			45%	
AD-5	10,560	55% (operator)					45%	
AD-1*	2,699	50% (joint operator)						50% (joint operator)
AD-6*	1,762	50% (joint operator)						50% (joint operator)
AD-8*	5,180	50% (joint operator)						50% (joint operator)

Notes

1. Woodside Energy (Myanmar) Pte Ltd
2. Total E&P Myanmar
3. Myanmar Petroleum Exploration & Production Co. Ltd.
4. MPRL E&P Pte Ltd.
5. Posco Daewoo Corporation
6. BG Exploration & Production Myanmar Pte Ltd ("Shell")
7. CNPC International Ltd

*Completion of farm-in to Blocks AD-1, AD-6 and AD-8 subject to satisfaction of conditions precedent.